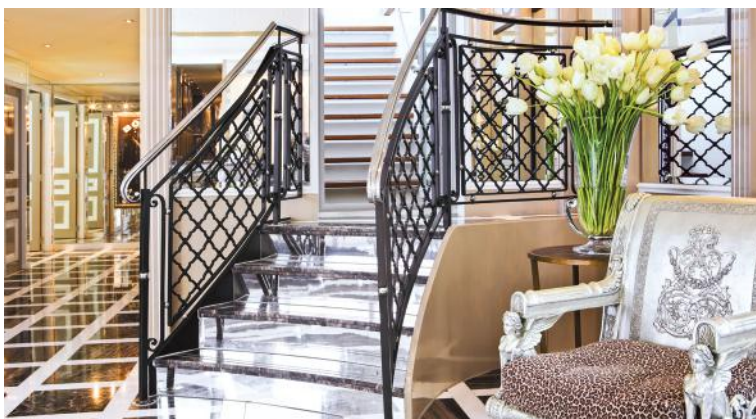




Inaugurated: 2003 | **Remodeled:** 2012 | **Length:** 361 ft | **Width:** 37.5 ft | **Voltage:** 110/220 volts | **Guests:** 130 | **Staff:** 41

PUBLIC AREAS & AMENITIES

- Blue Danube Lounge with full-service bar
- Captain's Lounge and Library
- La Motte Sky Lounge
- Palace Restaurant
- Sun Deck with life-sized chessboard
- Well-equipped fitness center
- Serenity River Spa™
- Patio lounge
- Guest laundry
- Elevator
- 24-hour specialty coffee and tea station
- Free Internet and Wi-Fi access



STATEROOMS & SUITES

Lavishly appointed riverview staterooms and suites have handcrafted Savoir® of England beds draped in the finest linens and a menu of pillow choices.

Stateroom and suite amenities include: generous built-in closets, individual climate-control thermostat, flatscreen TV with infotainment center and safe.

Marble bathrooms include: L'Occitane en Provence and Hermès products, plush towels, backlit magnifying mirror, cozy bathrobes and slippers.

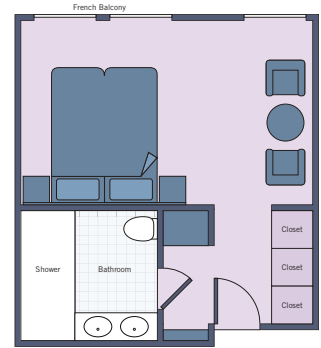
All suites are uniquely decorated and have additional amenities and services, including: in-suite butler service; packing and unpacking assistance; in-room breakfast; daily fruit and cookie plate, and an elegant evening snack; Nespresso coffee machine and fine teas; fully stocked minibar; bottle of wine upon arrival; shoe shine; and free laundry service.



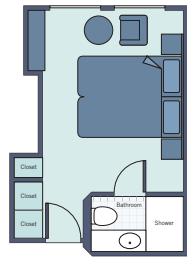
Suites: 4 (214 sq ft)
French Balcony



Category 1 Staterooms: 18 (151 sq ft)
French Balcony



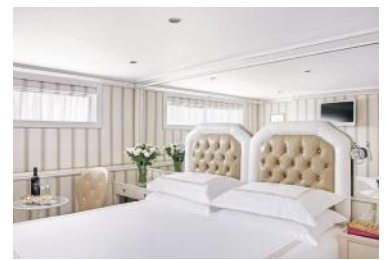
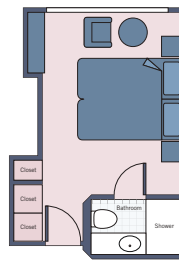
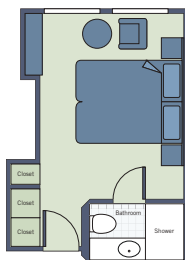
Category 2 Staterooms: 22 (151 sq ft)

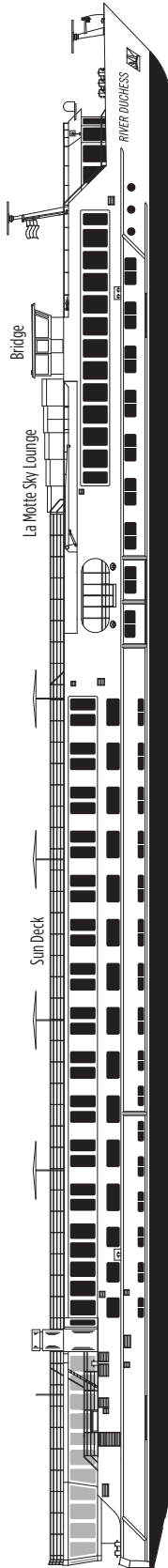


Category 3 Staterooms: 12 (151 sq ft)



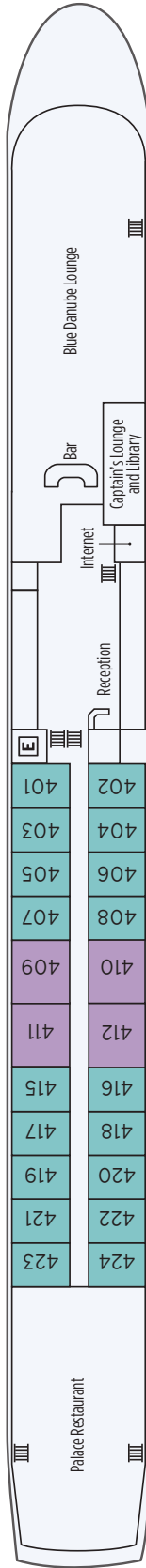
Categories 4 & 5 Staterooms: 9 (151 sq ft)





Rhine Deck

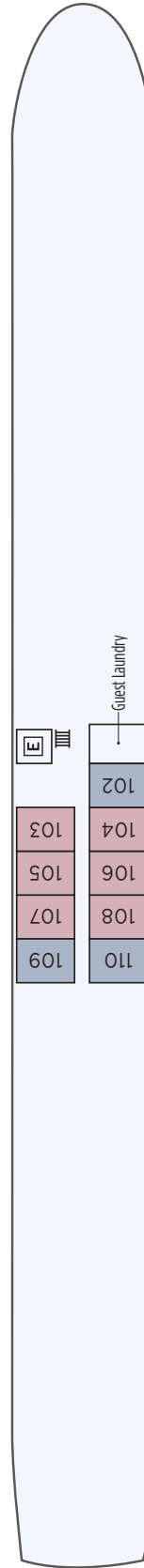
Staterooms and suites on this deck have French balconies



Danube Deck



Moselle Deck



Suite
 Category 1
 Category 2
 Category 3
 Category 4
 Category 5
 Elevator