



**Inaugurated:** 2014 | **Length:** 443 ft | **Width:** 37.5 ft | **Voltage:** 110/220 volts | **Guests:** 159 | **Staff:** 57

#### PUBLIC AREAS & AMENITIES

- Van Gogh Lounge with full-service bar
- Bar du Leopard with full-service bar
- Cézanne Restaurant
- Matisse Terrace
- The Coffee Shop
- Sun Deck
- Heated enclosed swimming pool
- Well-equipped fitness center
- Serenity River Spa™
- Guest laundry
- Elevator
- 24-hour specialty coffee and tea stations
- Free Internet and Wi-Fi access



#### STATEROOMS & SUITES

**Lavishly appointed riverview staterooms and suites** have handcrafted Savoir® of England beds draped in the finest linens and a menu of pillow choices.

**Stateroom and suite amenities include:** generous built-in closets, individual climate-control thermostat, flatscreen TV with infotainment center and safe.

**Marble bathrooms include:** L'Occitane en Provence and Hermès products, plush towels, backlit magnifying mirror, cozy bathrobes and slippers.

**All suites are uniquely decorated and have additional amenities and services, including:** in-suite butler service; packing and unpacking assistance; in-room breakfast; daily fruit and cookie plate, and an elegant evening snack; Nespresso coffee machine and fine teas; fully stocked minibar; bottle of wine upon arrival; shoe shine; free laundry service; and a special dinner in Bar du Leopard.

**The ultra-luxurious Royal Suite (410 sq ft with an Open-Air Balcony) offers extra special benefits.**

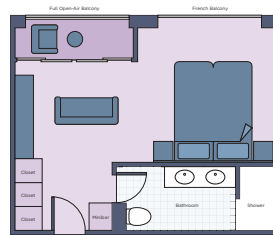
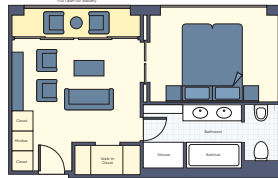


**Royal Suite: 1 (410 sq ft)**  
Open-Air Balcony

**Suites: 5 (305 sq ft)**  
Open-Air Balcony



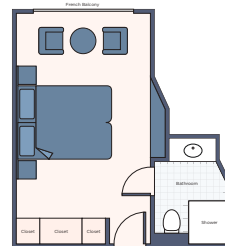
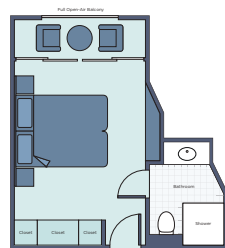
**Category 1 Staterooms: 23 (194 sq ft)**  
Open-Air Balcony



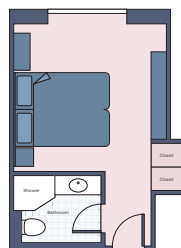
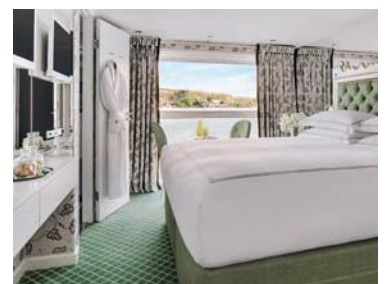
**Categories 2 & 3 Staterooms: 38 (194 sq ft)**  
French Balcony

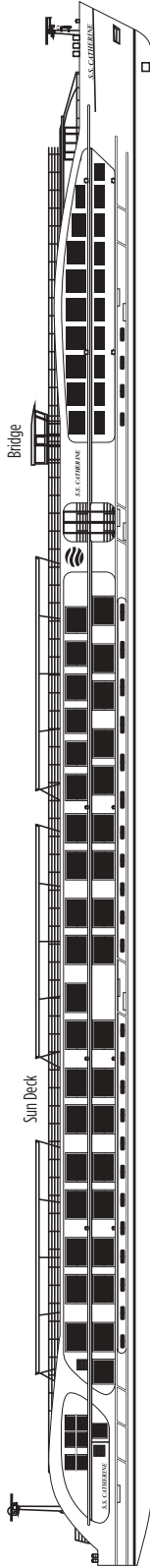


**Categories 4 & 5 Staterooms: 12 (162 sq ft)**

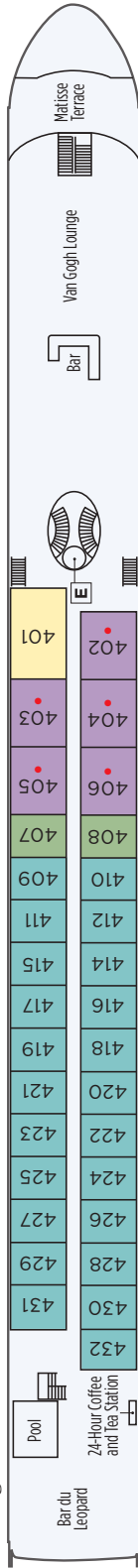


**Category 5 Single Stateroom: 1 (120 sq ft)**



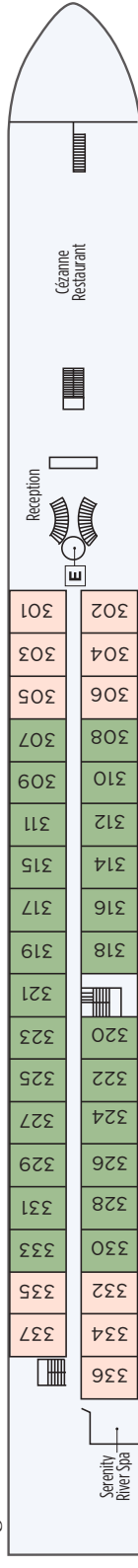


**Camargue Deck** Category 1 staterooms and suites on this deck have open-air balconies. Category 2 staterooms have French balconies.

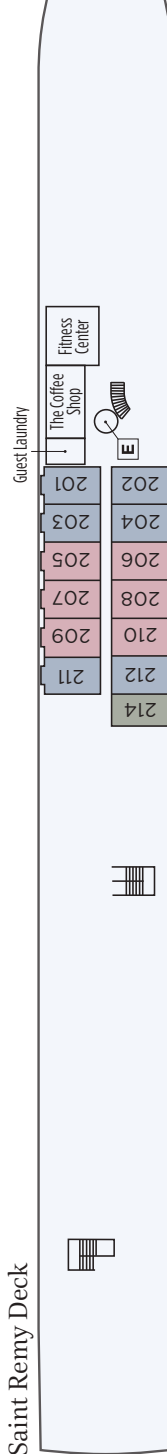


**Avignon Deck**

Staterooms on this deck have French balconies



**Saint Remy Deck**



- Royal Suite
  - Suite
  - Category 1
  - Category 2
  - Category 3
  - Category 4
  - Category 5
  - Category 5 Single
- E Elevator • Triple accommodation available

Note: Category 1 staterooms and suites on the Camargue Deck have open-air balconies that, with the touch of a button, will raise the glass to create a completely enclosed conservatory. Suites provide triple-accommodation options. Adjoining staterooms are available; please inquire at time of booking.