



S.S. MARIA THERESA

DANUBE RIVER

INAUGURATED 2015
GUESTS 150; STAFF 58

AN EXQUISITE CASTLE on water.

A ship fit for Empress Maria Theresa herself, this floating boutique hotel features 18th-century décor and an elegant atmosphere throughout. Original art includes works by Frederik Bloemaert.

SUITES AND STATEROOMS

LAVISHLY APPOINTED RIVERVIEW STATEROOMS AND SUITES have handcrafted Savoir® beds of England draped in the finest linens with a menu of pillow choices.

STATEROOM AND SUITE AMENITIES INCLUDE built-in closets, hair dryer, safe, individual climate-control thermostat and a flat-screen TV with infotainment center.

MARBLE BATHROOMS INCLUDE Hermès bath and body products, plush towels, special towel warmers, backlit magnifying mirror, heated mirrors, cozy bathrobes and slippers, separate rain shower and tub and a secluded toilet area.

SUITES ARE UNIQUELY DECORATED AND HAVE ADDITIONAL AMENITIES AND SERVICES, INCLUDING in-suite butler service; packing and unpacking assistance; daily fruit and cookie plate, an evening snack; Nespresso coffee machine and fine teas; fully stocked minibar; bottle of wine upon arrival; and free laundry service.

SHIP SNAPSHOT:

- Grand Suite: 1 (410 ft² / 38 m²)
- Suites: 10 (305 ft² / 28 m²)
- Deluxe Balcony: 18 (194 ft² / 18 m²)
- French Balcony: 36 (194 ft² / 18 m²)
- Classic: 10 (162 ft² / 15 m²)
- Length: 443 ft / 135 m
- Width: 37.5 ft / 11.4 m
- Voltage: 110/220 volts

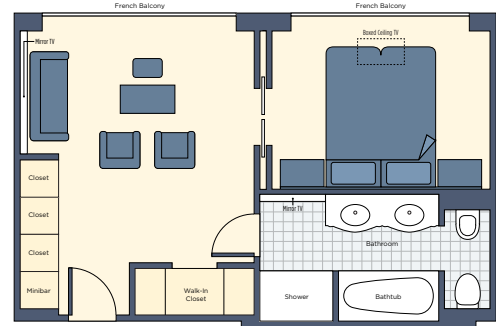
PUBLIC AREAS AND AMENITIES

- Bar du Leopard
- Habsburg Salon
- Bohemian Terrace
- Pool
- Baroque Restaurant
- Serenity River Spa
- Lipizzan Cinema
- 24-hour specialty tea and coffee station
- Well-equipped fitness center
- Elevator
- Guest laundry
- Free Internet and Wi-Fi access

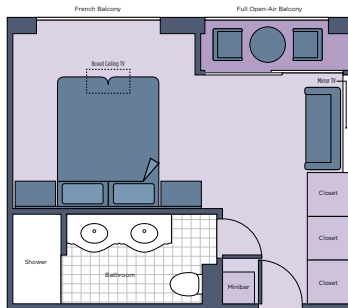
NOTE: Suites on the Hofburg Deck have open-air balconies that, with a touch of a button, will raise the glass to create a completely enclosed conservatory. Suite 401 has a French balcony. Designated adjoining staterooms are available. Designated suites provide triple-accommodation options.

CST #2075415-20

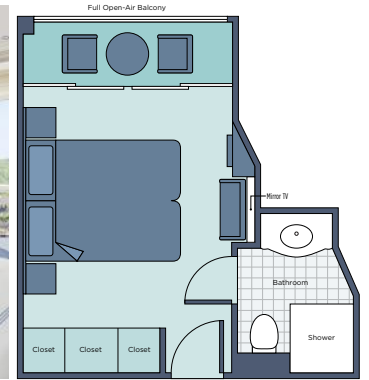
Grand (Royal) Suite (410 sq ft / 38 sq m)



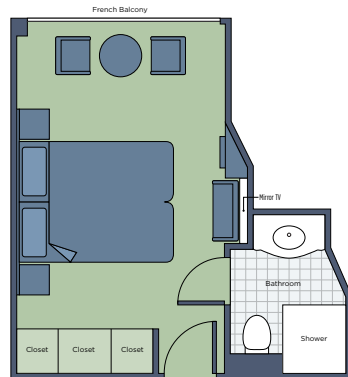
Suite (305 sq ft / 28.3 sq m)



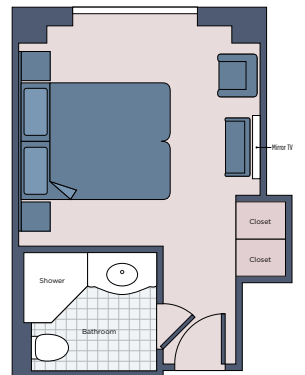
Deluxe Balcony (Category 1) (194 sq ft / 18 sq m)



French Balcony (Category 2-3) (194 sq ft / 18 sq m)



Classic (Category 4-5) (162 sq ft / 15 sq m)



NOTE: Suites on the Hofburg Deck have open-air balconies that, with a touch of a button, will raise the glass to create a completely enclosed conservatory. Suite 401 has a French balcony. Designated adjoining staterooms are available. Designated suites provide triple-accommodation options.

CST #2075415-20

Baroque Restaurant



Lipizzan Cinema



Bar du Leopard Pool



Habsburg Salon

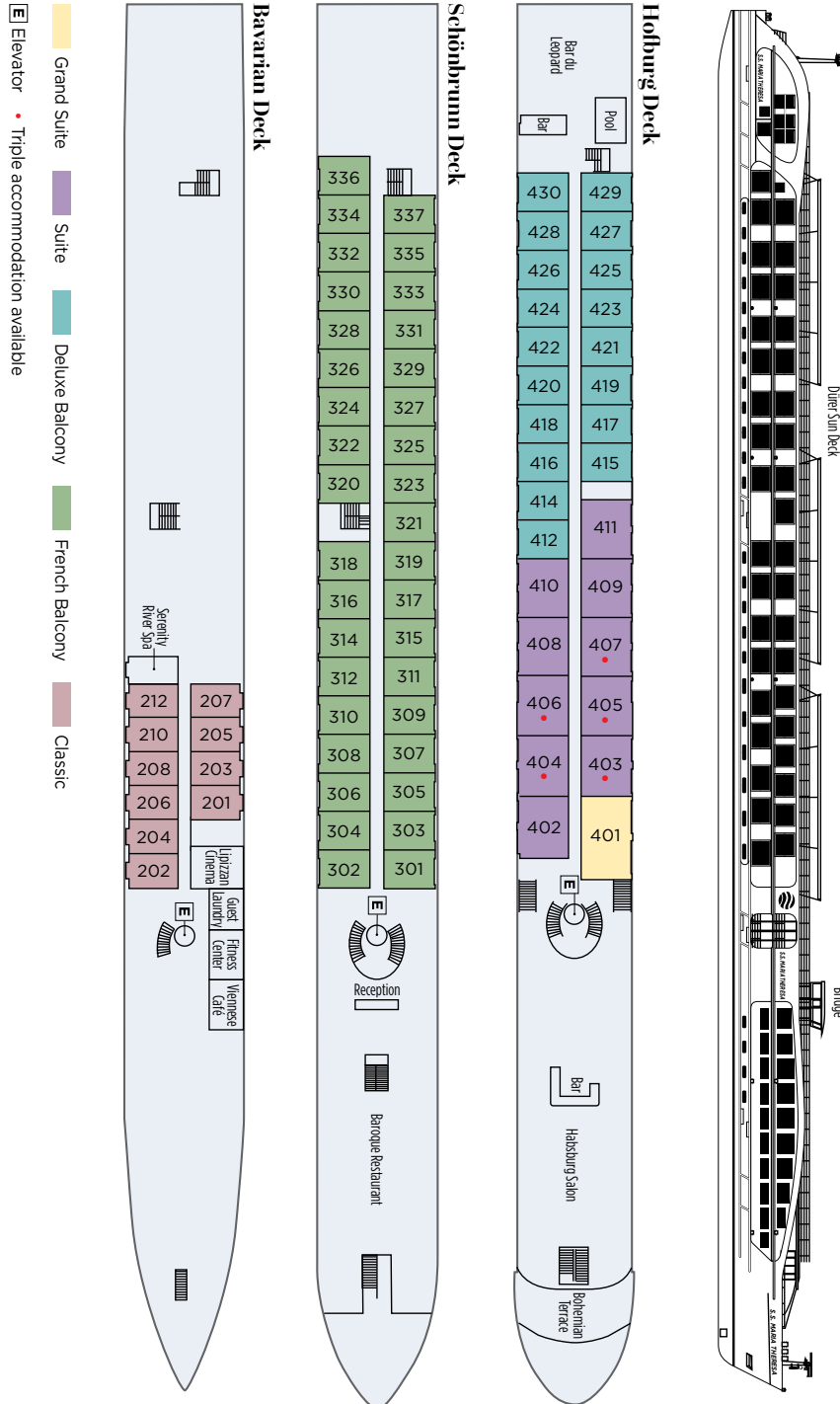


Lobby



NOTE: Suites on the Hofburg Deck have open-air balconies that, with a touch of a button, will raise the glass to create a completely enclosed conservatory. Suite 401 has a French balcony. Designated adjoining staterooms are available. Designated suites provide triple-accommodation options.

CST #2075415-20



NOTE: Suites on the Hofburg Deck have open-air balconies that, with a touch of a button, will raise the glass to create a completely enclosed conservatory. Suite 401 has a French balcony. Designated adjoining staterooms are available. Designated suites provide triple-accommodation options.

CST #2075415-20