

## Luxury - Journey

Explore the Ecuadorian Amazon in supreme comfort. The Anakonda offers a personalized service: our concierge takes care of every detail aboard and onshore, provides information about the cruise's destination and the surrounding wildlife, and customizes itineraries for guests' special requirements.

### ANAKONDA SUITES - 36 guests

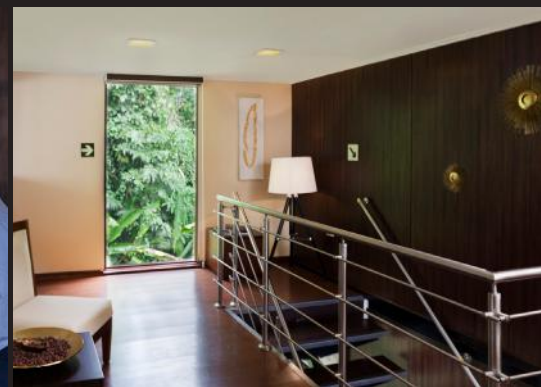
- ◆ 14 Standard suites (20 m<sup>2</sup> / 215 ft<sup>2</sup>) with french balconies
- ◆ 4 Deluxe suites (24 m<sup>2</sup> / 258 ft<sup>2</sup>) with whirlpool bathtub and private balconies

All suites are river facing and include ceiling to floor windows, an air conditioning system and a private bathroom with hot water.



### FEATURES

- ◆ Boutique
- ◆ Crystal Room
- ◆ Conference Room
- ◆ El Dorado Bar-Lounge
- ◆ Al Fresco Shaded Lounge
- ◆ Panoramic View Restaurant
- ◆ Spacious Sundeck with Outdoor Hot Tub



Recognitions  
& awards:

AS FEATURED IN



2019



# feel THE AMAZON

## BE A NATIVE

• Indigenous encounters •

## SHARE ON BOARD

• Special moments •

## LIVE THE ADVENTURE

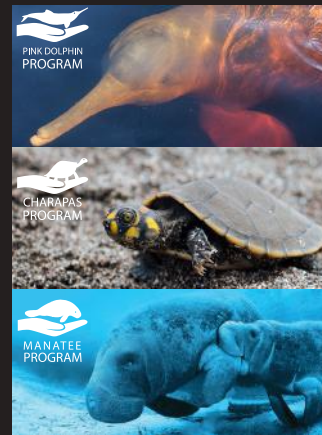
• Exclusive challenges •

## BREATHE THE AMAZON

• Rainforest excursions •

## ITINERARIES

## CONSERVATION PROGRAMS



## OPERATION DAYS

4 DAYS / 3 NIGHTS

5 DAYS / 4 NIGHTS

8 DAYS / 7 NIGHTS

SUNDAY - WEDNESDAY

WEDNESDAY - SUNDAY

WEDNESDAY - WEDNESDAY OR SUNDAY - SUNDAY

## HIGHLIGHTS

- ◆ Rainforest Night Walks
- ◆ Pañacocha Biological Corridor
- ◆ Parrot Clay Licks
- ◆ Indigenous Communities
- ◆ Canoeing

- ◆ Kayak Adventure
- ◆ Yasuni National Park
- ◆ Wildlife Observation
- ◆ Observation Canopy Tower
- ◆ Native House

- ◆ Life on Board
- ◆ Rainforest Excursion
- ◆ National & International Cuisine
- ◆ Glamping